



NEXT Student Design Competition

Steelcase Products, IDE 401 Office Planning,
Fall 2020

Concept Statement

NEXT is a Global Technology company known for their wellness and meditation apps that help improve the lives of its clients.

This interior design for their new satellite office in Atlanta, GA draws from the regional culture by taking inspiration from the street art in Atlanta, the bold colors, intricate pieces and raw feeling swirls you into the art and builds from the reflection of the creativity of the people of Atlanta.

The design creates multi-functional spaces that support many posture types and are modifiable to their needs to best encourage productivity. Each space integrates technology to enhance collaboration and connectivity between office workers and remote workers, and boasts a lively color palette with visual connection between spaces to encourage productivity.

The layout utilizes the large existing windows, giving a view and access to daylight, to improve employee wellbeing. While full spectrum daylighting interior lights, a variety of ergonomic postures offered in the seating, and placement of green walls promote physical and mental health. All this is true while following Covid-19 avoidance principles.

And when it comes to water and energy the low flush toilets and motion sensed lights help to use less.

In terms of sustainability, the furniture is from Steelcase and is created ergonomically and with sustainability in mind. They have a human-centered approach to design that starts with the planet and their products sustainability and this helps them design for circularity by getting rid of or not using materials of concern and taking the time to understand what goes into their products to be both precautionary and proactive to create solutions that are good for not just the planet but also for people.

The design, through all these things, meets the needs and embodies the values of NEXT while giving a nod to the beautiful city of Atlanta.

Principles for Post Covid-19 Office Design

Anahbelle Gregg-Office Design-Fall 2020-IDE 401

Pre-entry Wellness check - Have a first line of defense before anyone is allowed in. an effort to promote wellness and reassurance.

Touch-less entry- A wave type system that allows people in without touching a shared surface such as a door handle. Keeps the spread of germs to a minimum

Air filtration- Good air filtration does not let viruses and bacteria circulate the building and ensures fresh clean air to all

Social distancing sensors- Keeps track of the 6 foot distancing in the building to help enforce the rule

Remote collaboration tools- Tools that allow in and out of office individuals to connect and come together effectively to spark creativity and innovation

Autonomous cleaning solutions- cleaning that does not need to be done by humans but both cleans and reassures people that the surface they are going to come into contact with is clean and safe to touch

Divisions for health and privacy- create spaces that have divisions in sensible and safe ways that still leave people feeling connected in community areas and alone if desired in private areas

Equip outdoor spaces - create space outdoors that have the necessary space and equipment to hold meetings, people, and office activities

Greenery - place greenery around to promote wellness and serenity

Guided circulation patterns- One way or directed circulation can keep people from making unnecessary contact or getting too close to one another. It also streamlines the office circulation

Spacial content- be aware of what is placed in the space to leave room for the guidelines to be followed

Expand the ecosystem of offices- give people options and choice of their preferred working environment so everyone is safe, understood and productive

Focus on individual and collaboration opportunities with easy transitions- create ways for people to meet together for more than just the important things (water-cooler chats) make it easy for people to collaborate or be alone

Diagrams

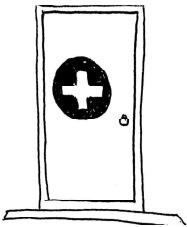


Figure 1

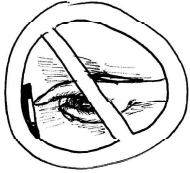


Figure 2



Figure 3

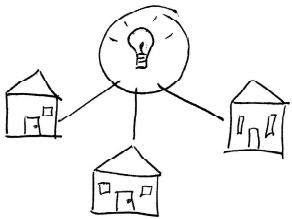


Figure 5

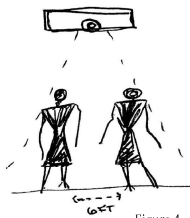


Figure 4



Figure 6



Figure 14



Figure 16



Figure 18

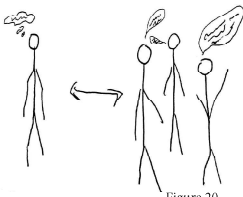


Figure 20

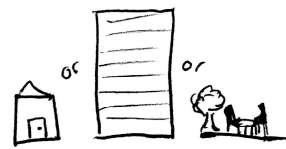


Figure 19

Low touch/voice enabled technology- A safe and effective way for everyone to be able to use the same technology around the office with minimum contamination and little cleaning necessary

Employee wellness, communication and engagement tools - HR can help promote healthy minds and healthy people

Cyber security and home network security- Keeps all information from you or your office safe from hacking and cyber attacks

Low density areas- promote and encourage a safe distance between all employees

Design in flexibility- create areas whose purpose can change as needed to meet the needs of the employees safely

Spacious furniture set ups- bring in furniture that promotes safe distancing in a comfortable, cleanable, changeable fashion

Posture - Provide a variety of options for people to sit, stand, lean, collaborate or have solitude

Make every collaboration space high performing- every space has the necessary tools and equipment to be effective and easy to use whenever needed

Merge the digital and the physical- create options where people can be in person or online and collaborate easily between the two forms of media.

References

Competing in the Post-Covid Era. (2020). Retrieved September 08, 2020, from https://buffalostate.open.suny.edu/bbcswebdav/pid-1845962-dt-content-rid-17115067_1/courses/202030-IDE401-4289/Competing in the Post-COVID Era - Steelcase.pdf

Reopening: The Tech-Enabled Office in a Post-Covid World. (2020). Retrieved September 08, 2020, from [https://buffalostate.open.suny.edu/bbcswebdav/pid-1845959-dt-content-rid-17115062_1/courses/202030-IDE401-4289/CB-Insights_The-Tech-Enabled-Office-Journey\(1\).pdf](https://buffalostate.open.suny.edu/bbcswebdav/pid-1845959-dt-content-rid-17115062_1/courses/202030-IDE401-4289/CB-Insights_The-Tech-Enabled-Office-Journey(1).pdf)

Taking the Office Outside. (2020). Retrieved September 08, 2020, from https://buffalostate.open.suny.edu/bbcswebdav/pid-1845963-dt-content-rid-17115068_1/courses/202030-IDE401-4289/Taking the Office Outside - Steelcase.pdf

Together Again: The Future of Shared Spaces in the Office. (2020). Retrieved September 08, 2020, from https://buffalostate.open.suny.edu/bbcswebdav/pid-1845966-dt-content-rid-17115076_1/courses/202030-IDE401-4289/Collaborative - Social Space Design After COVID-19.pdf

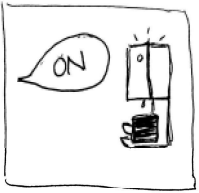


Figure 7



Figure 9

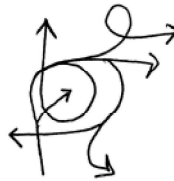


Figure 11



Figure 13

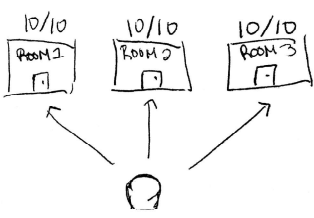


Figure 21

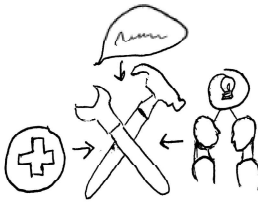


Figure 8

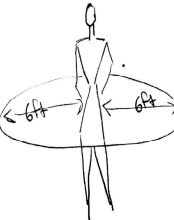


Figure 10

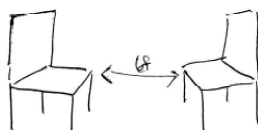


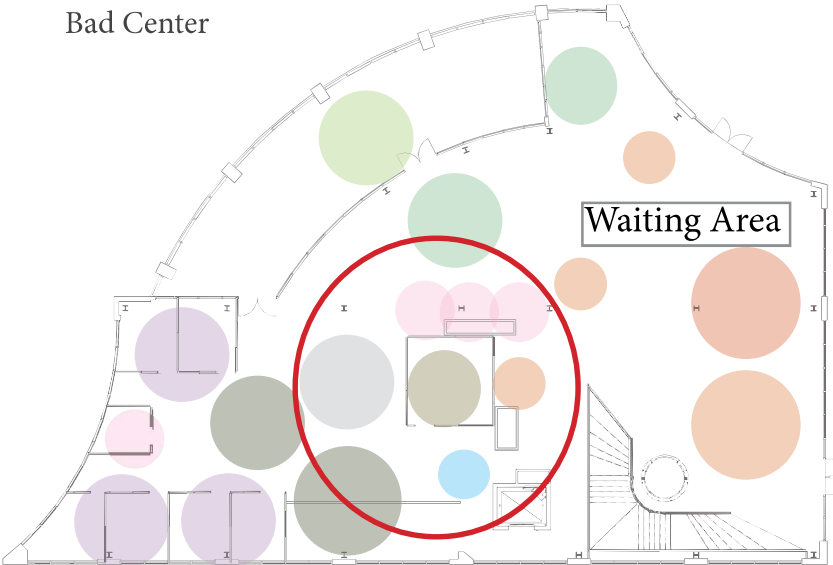
Figure 12



Figure 22

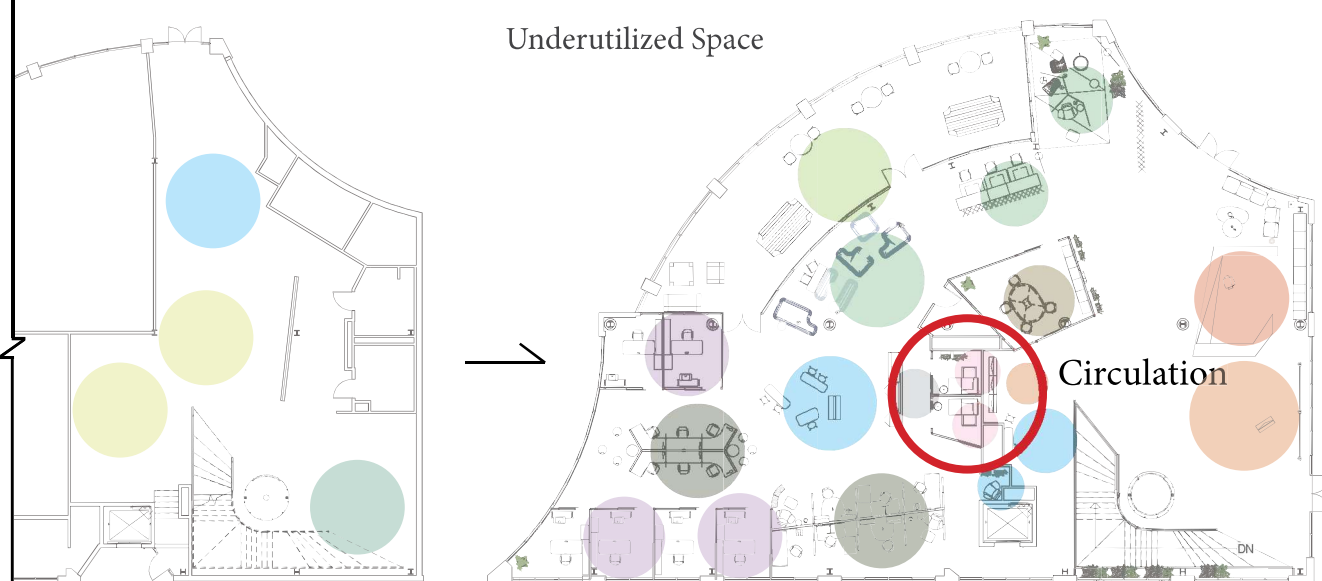
Blocking Diagram Progression

Bad Center



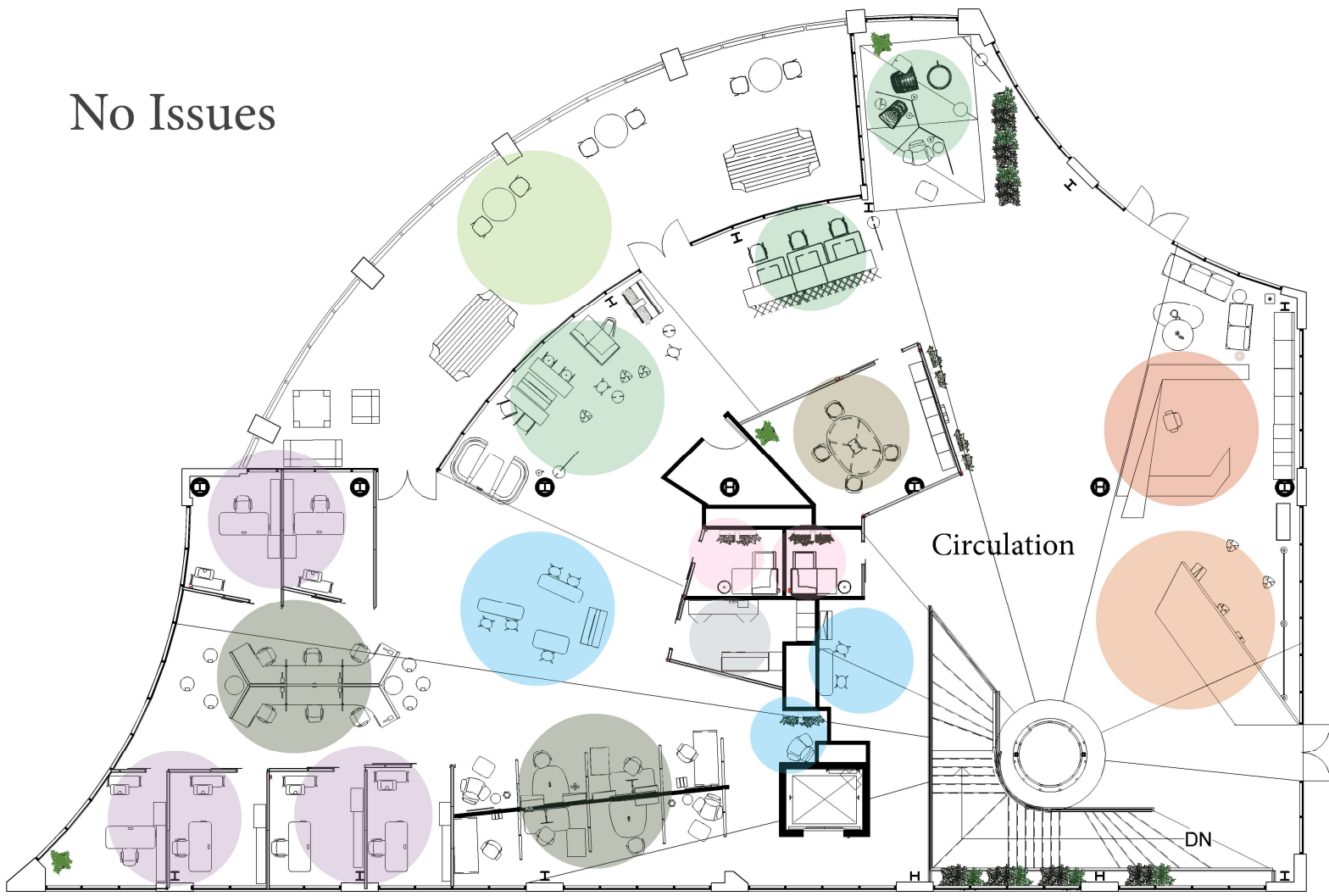
The enclaves were too public and could be switched with the video conference center to achieve that but the inspiration zone may have to be altered

Underutilized Space



The resource center was way too in the open and needed to be moved to a house location somewhere in the center of of the plan

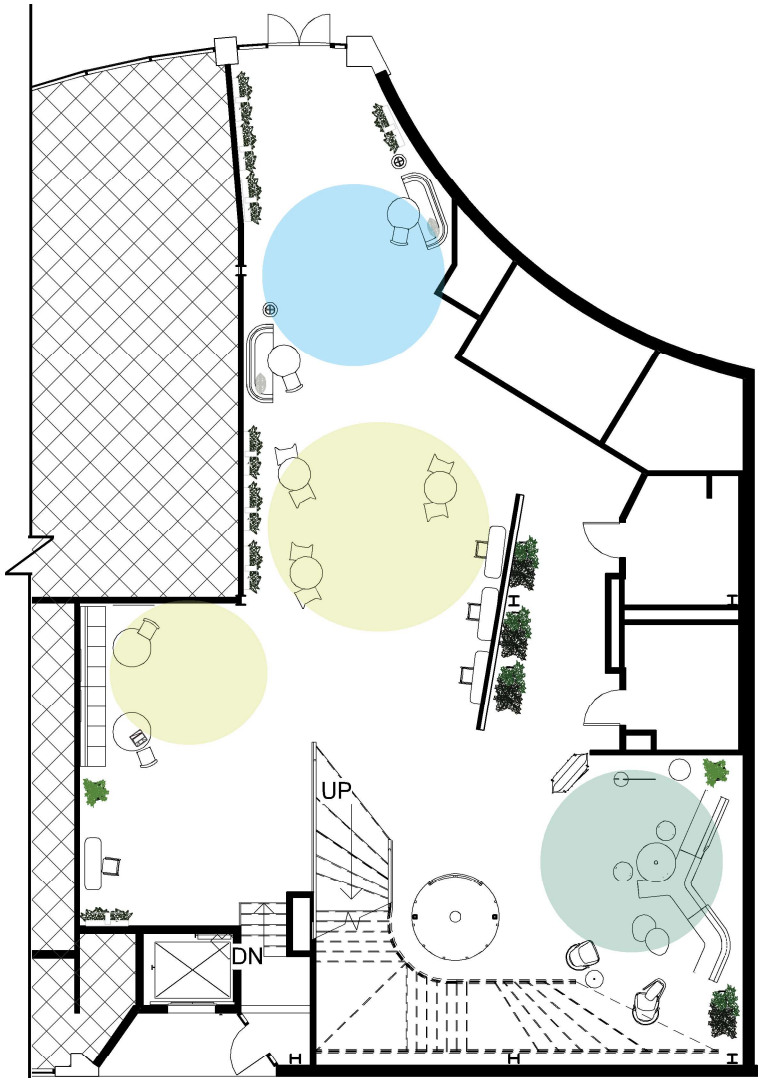
No Issues



① Level 3 Furniture Plan
1/16" = 1'-0"

Key

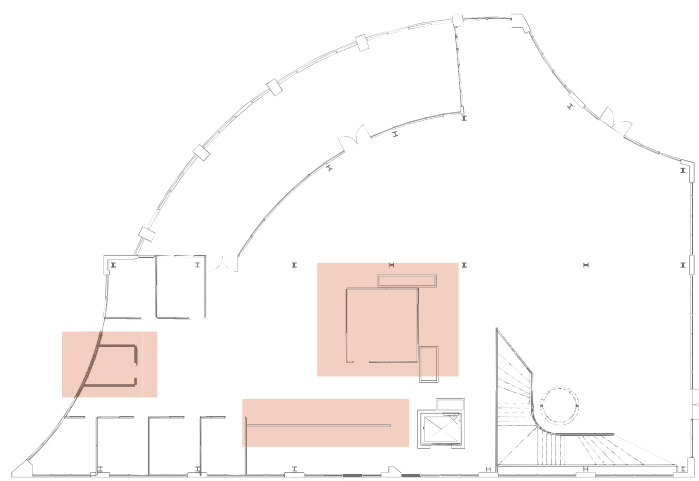
- NEEDS IMPROVEMENT
- Work Cafe
- Balcony
- Forum
- Project Teams
- Video Conf
- Open Office
- Resource Center
- In-Between Space
- Private Offices
- Private Enclaves
- Reception
- Inspiration Zone



① Level 1 Furniture Plan
1/16" = 1'-0"

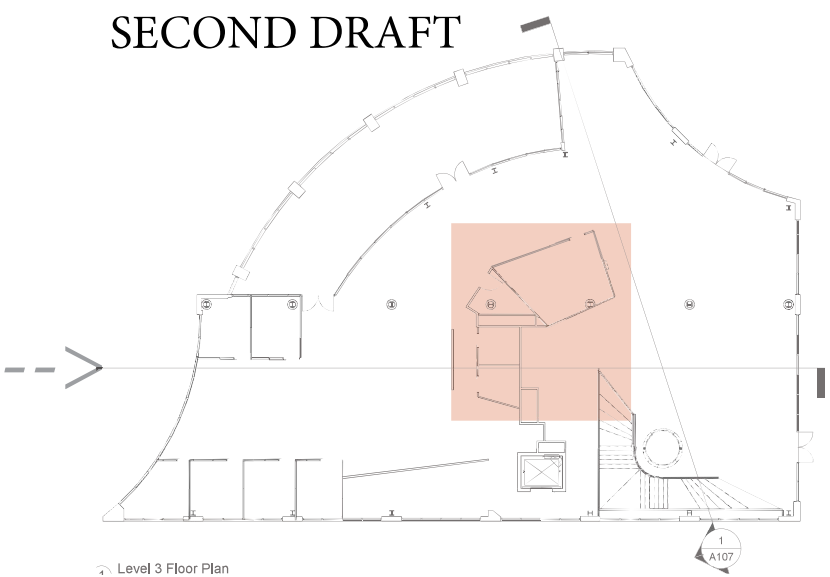
Floor Plan

FIRST DRAFT



- Access to daylight in the open office, reconfiguration of enclaves and radial connectivity needed to be addressed

SECOND DRAFT

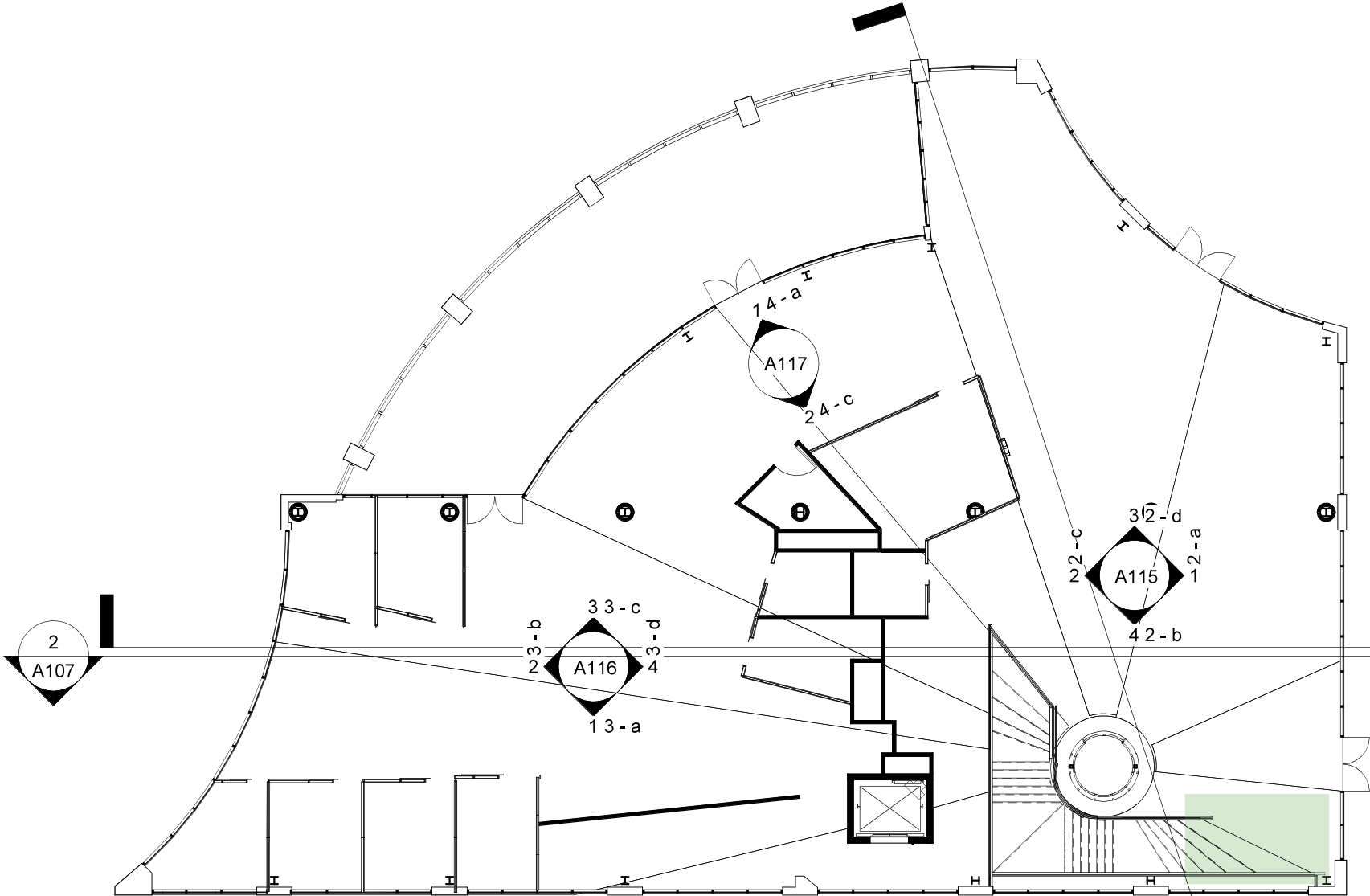


- Placement of the resource Center, and radial connection needed to be addressed

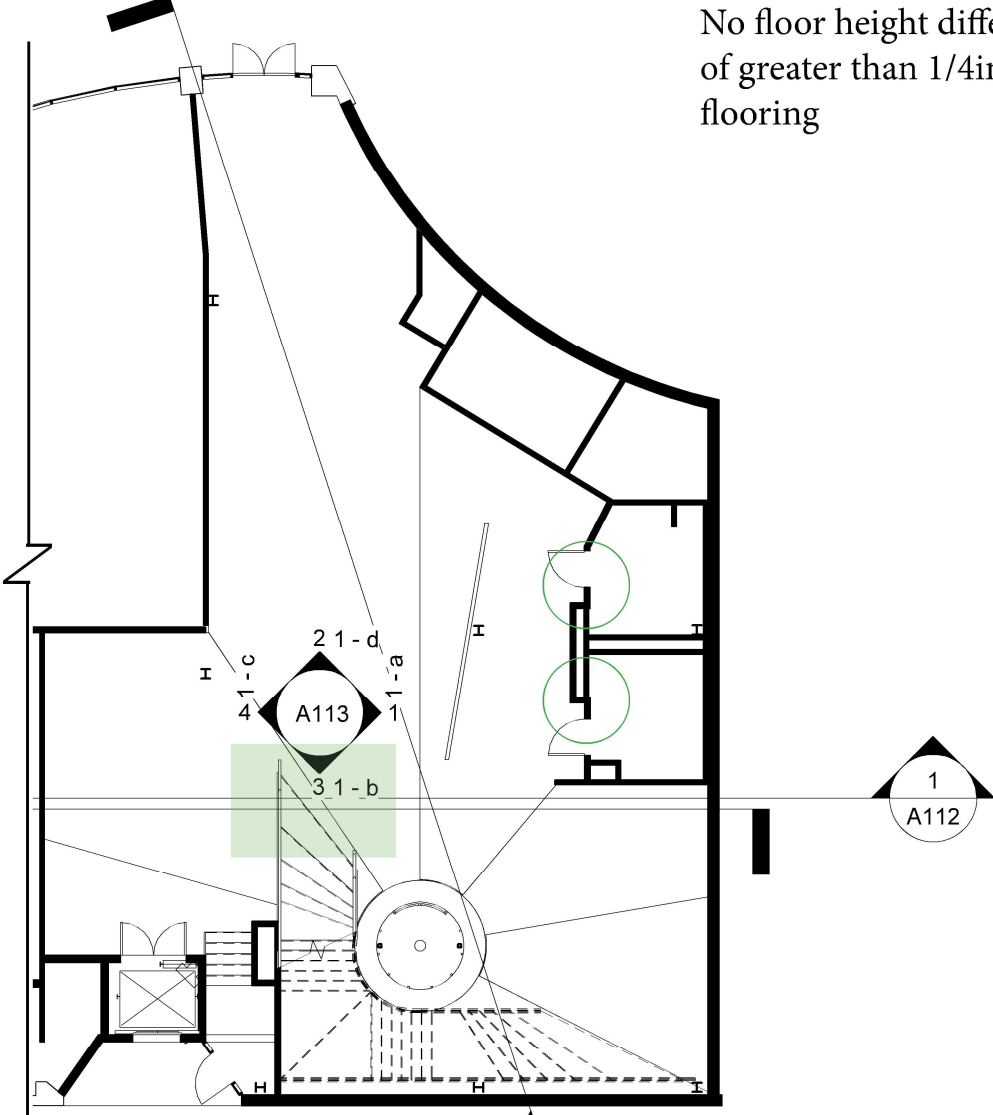
Changes

ADA Compliance

A clear circle of at least 60 inches around in the restrooms
Hanrails that stick out 1 foot beyond the stairs
No floor height differences of greater than 1/4in in the flooring



1 Level 2 Floor Plan
1/16" = 1'-0"



1 Level 1 Floor Plan
1/16" = 1'-0"

Final Furniture Plan

COVID-19 Safety compliance



-Possibility of 6 ft distance maintained throughout

-Wellness check before entry

-No touch doors

-Remote collaboration

-Greenery

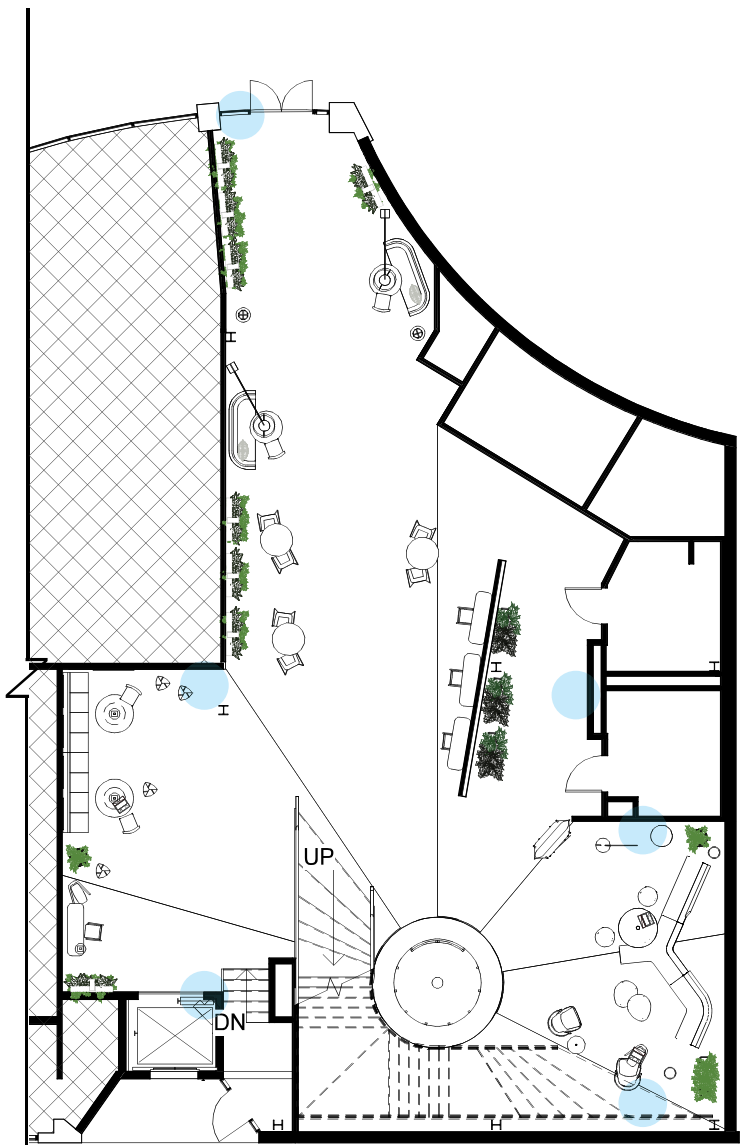
-Many postures available

-Hand sanitizers

-Wide walkways

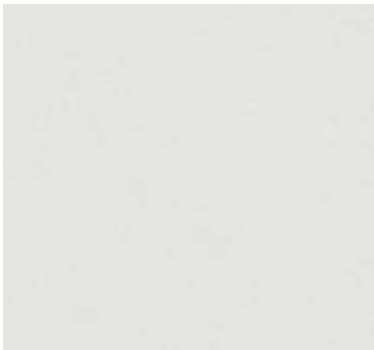
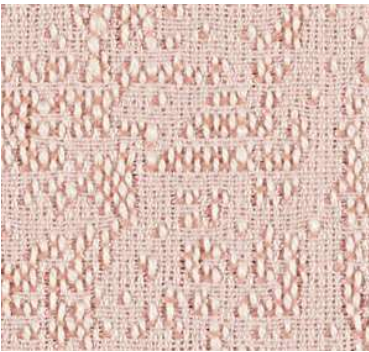
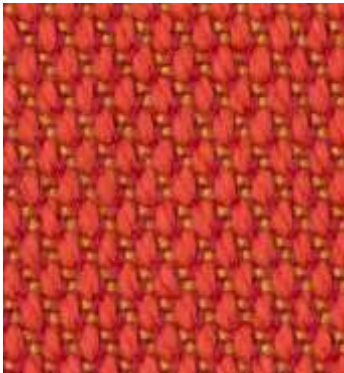
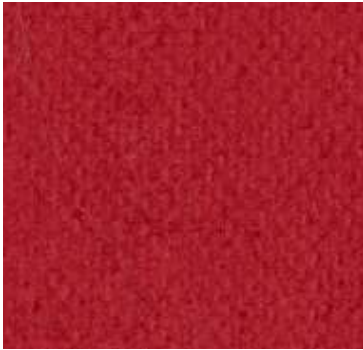
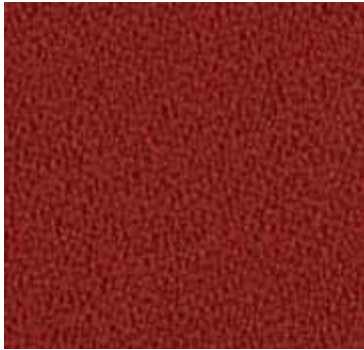


1 Level 2 Furniture Plan
1/16" = 1'-0"



1 Level 1 Furniture Plan
1/16" = 1'-0"

Materials Board



Floor Finish Plan

Materials-



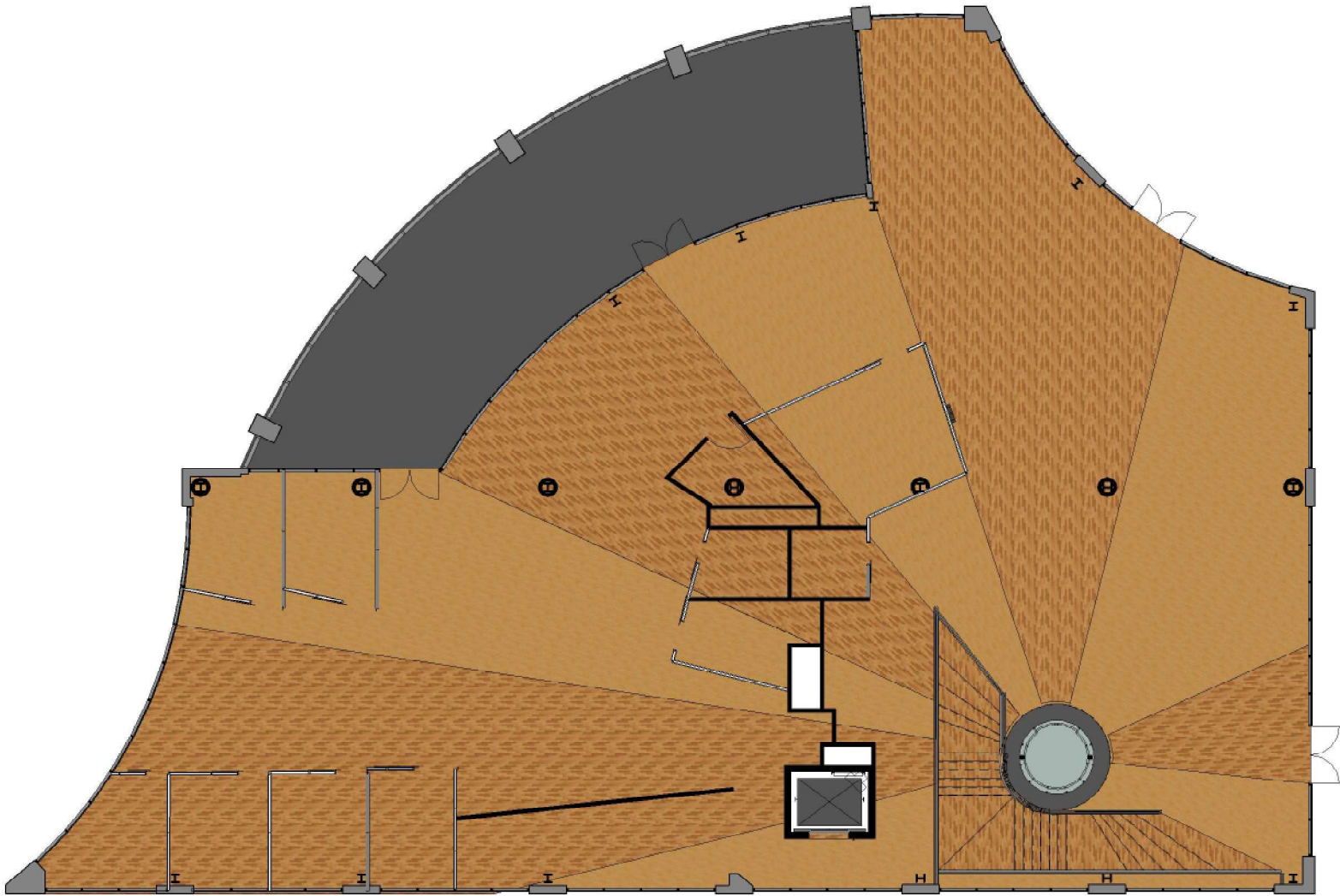
Concrete



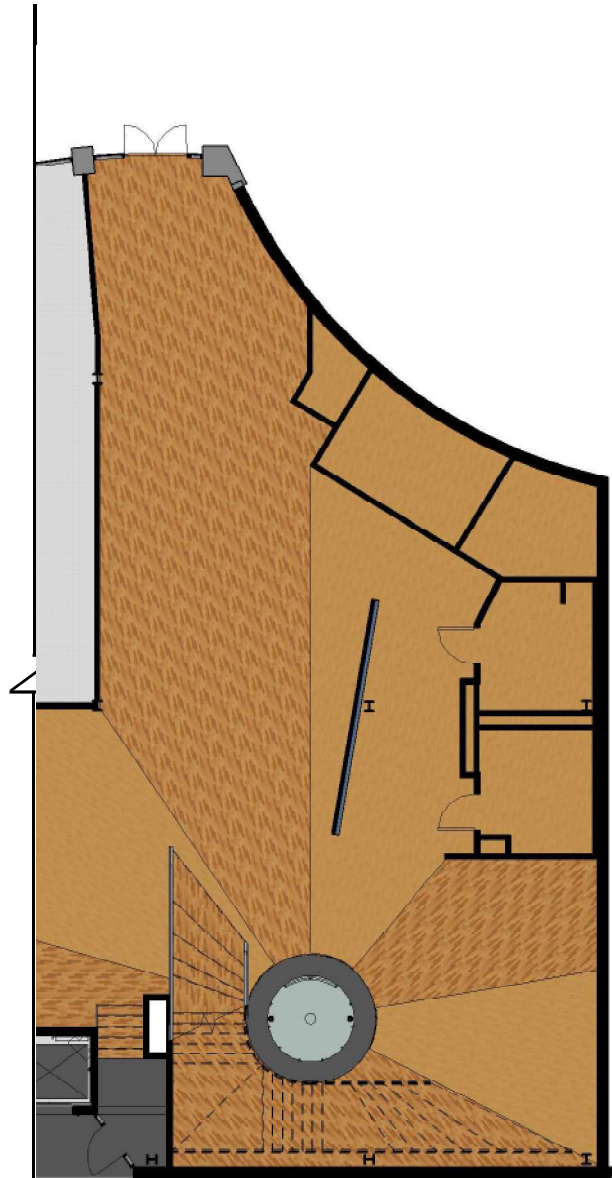
Hardwood Maple



Hardwood Beech



1 Level 2 Floor Plan
1/16" = 1'-0"



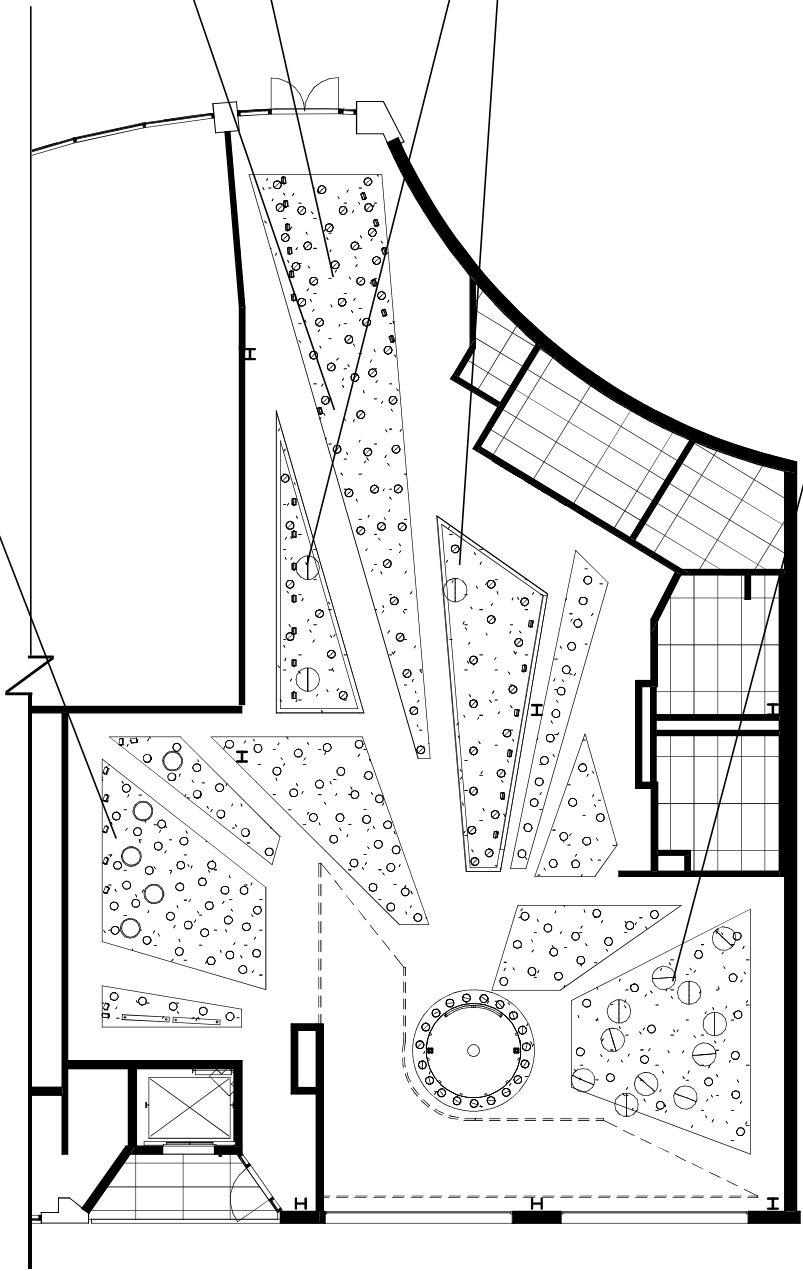
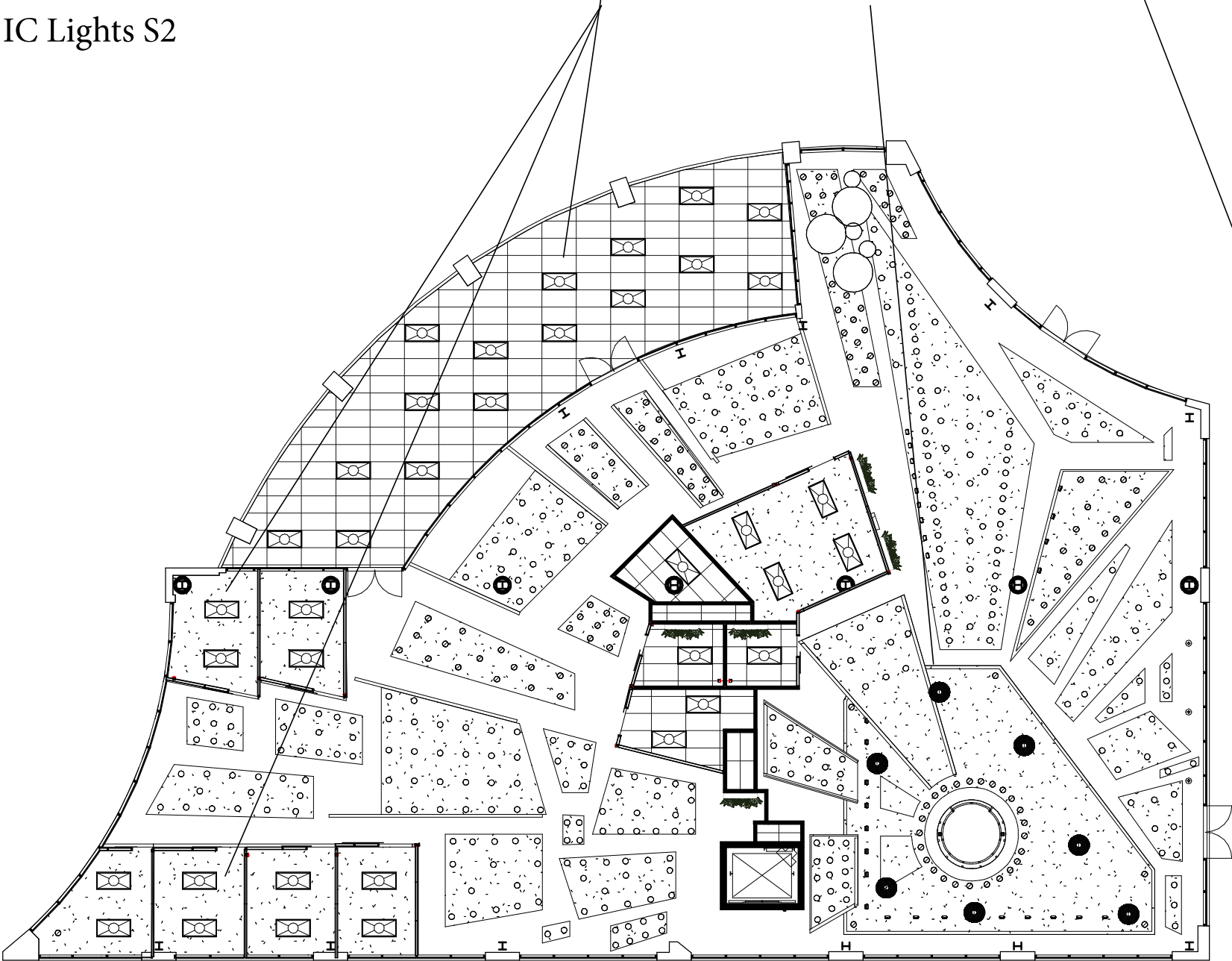
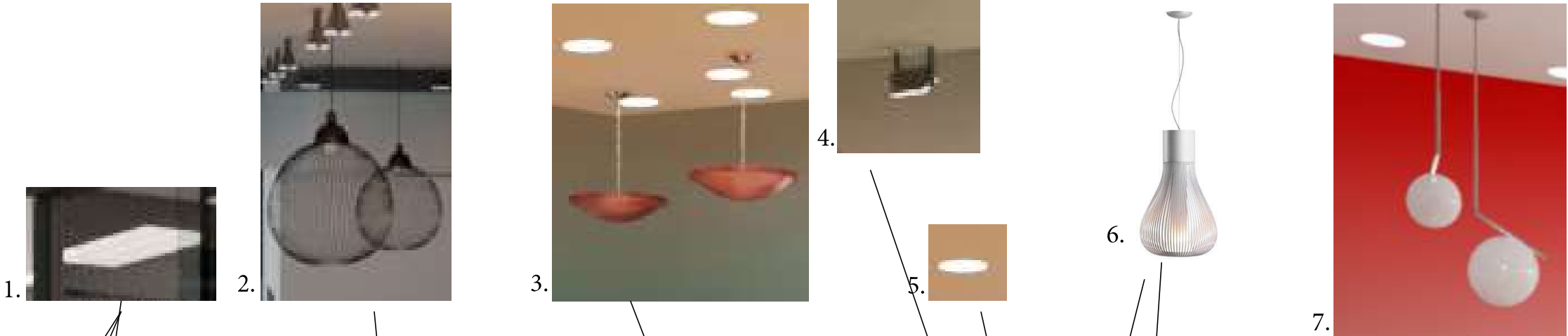
1 Level 1 Floor Plan
1/16" = 1'-0"

Refected Ceiling Plan

Lighting

Full spectrum daylighting (all)

- 1. 2x4 Parabolic
- 2. MI3NONRANDOM1
- 3. Hemisphere Pandant light
- 4. Spot Light
- 5. Recessed can
- 6. Flos Chasen
- 7. Flos IC Lights S2



First Floor Renderings: Stairs

The stairs playfully twisting around an elegant glass elevator becomes the center of my design. The space echoes the creative vibrant designs seen in Atlanta street art with a contrasting color scheme and many levels being established in the ceiling plane. The lively look is experienced most in the transitions, through the spaces.



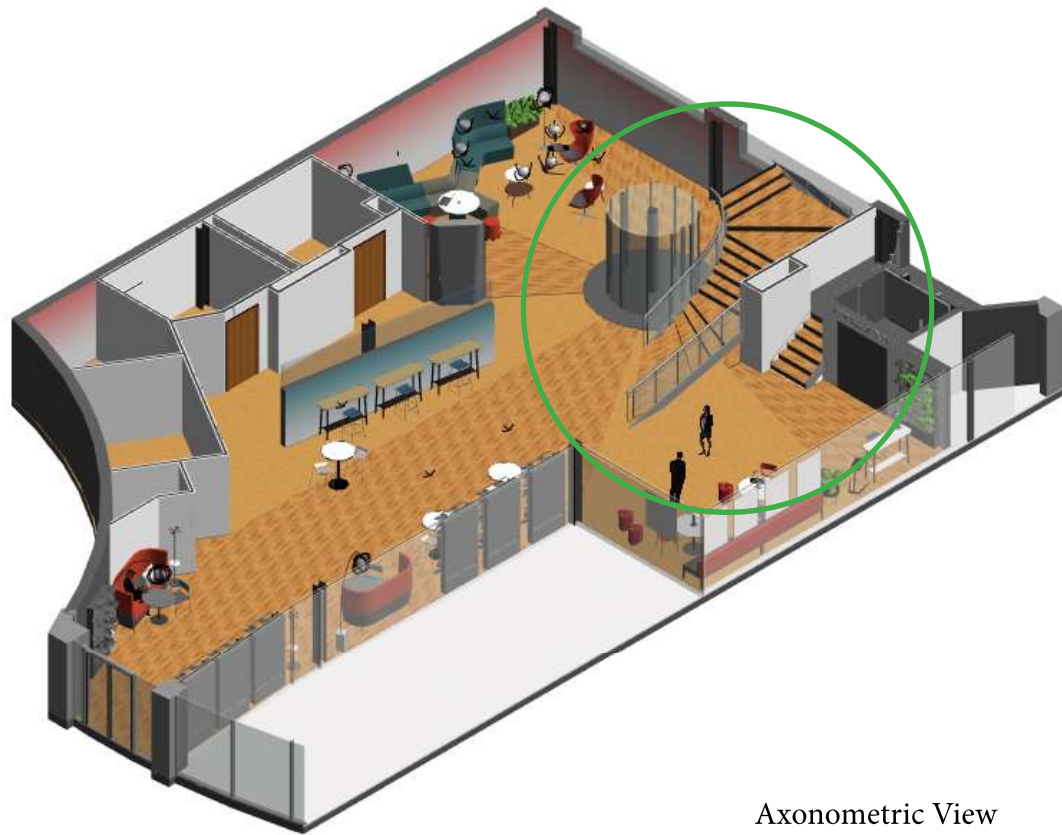
Stairs from side cafe view



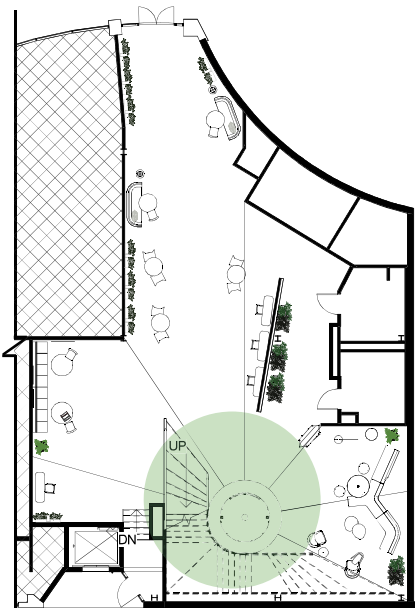
Stairs from cafe view



Birds eye second floor stairview



Axonometric View



Key plan

First Floor Renderings: Project Team Spaces

This space uses of a pop of teal as an accent and globe lights to tie back into the circular theme and bring energy to the space



Material- Paint
Color- Red-orange to white



Furniture Piece- SULLY-01
Material- TR08 Red Current



Furniture Piece- Reguard Planter
Material- Walnut Veneer



Furniture Piece- Lilly Pad Nesting Table
Materials- 2730 Arctic white, Walnut Veneer, Antique Brass



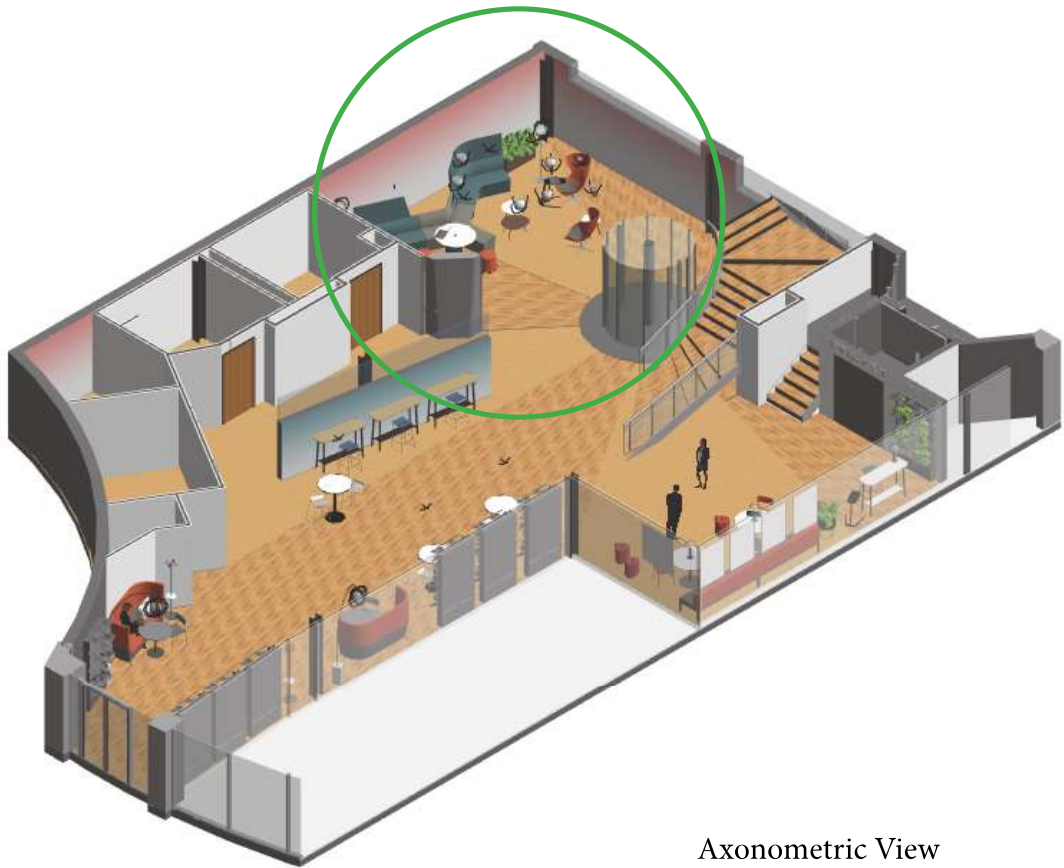
Furniture Piece- Range Seating AVI-02
Materials- 5L36 Heather Blue, TR08 Red Current, Polished Aluminum



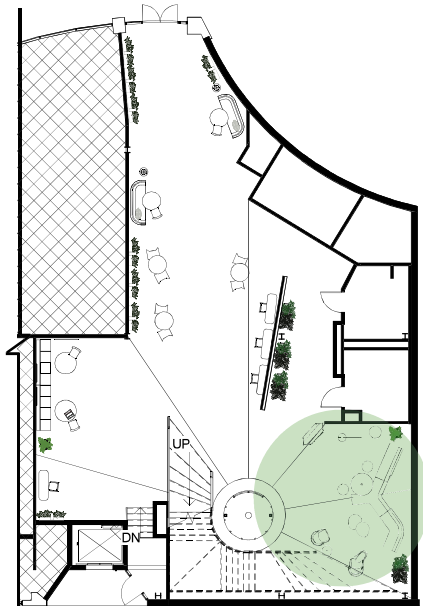
Furniture Piece- 1518604371AD-13_LD
Materials- 5L35 Marina, TR04 Nutmeg Beige, 60999 Charcoal



Project Team spaces



Axonometric View



Key plan

First Floor Renderings: Work Cafe



1c



Material- Paint
Color- Blue-Green to white



Furniture Piece- Turnstone Simple chair
Materials- TR08 Red current, 4799 Platinum



Furniture Piece- Camfire Pouf
Material- 5G74 Picnic, Grey foam



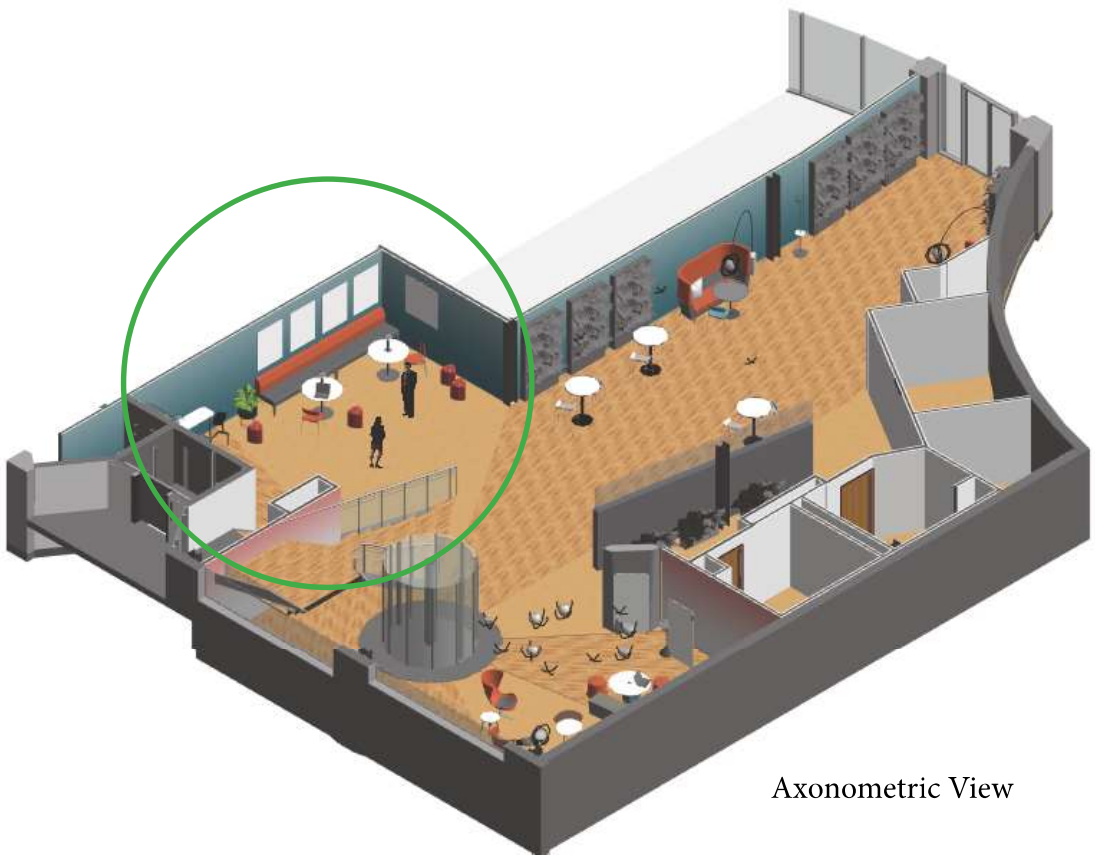
Furniture Piece-Enea Table 42-Dia
Materials- 2730 Arctic White, Metal Black



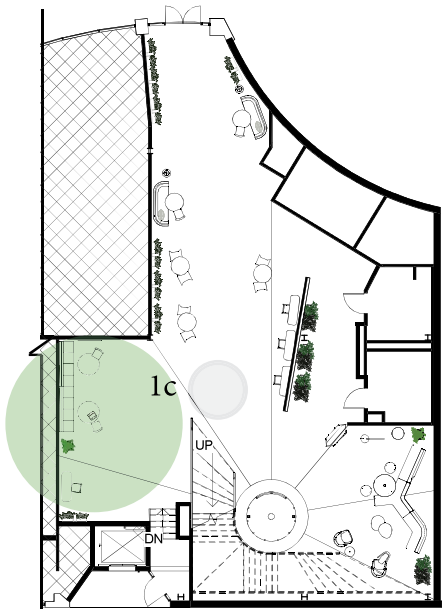
Furniture Pieces- Flex Table Slim, Last Minute seating stool high
Materials- 6527 Mearle, 2730 Arctic White, Metal Black, P630 Heather grey, 3602 Desert Oak, RE10 Blue Jean



Furniture Piece- Reguard Frame 88W
Materials- 7360 Merle, TR08 Red Current



Axonometric View



Key plan

First Floor Renderings: Work Cafe continued

The design uses the same complimentary scheme for the whole bottom floor in some variation, with each space having a different balance of the colors.



— Furniture Piece- Table top round
HBL
Materials- 2730 Arctic White,
Metal Black



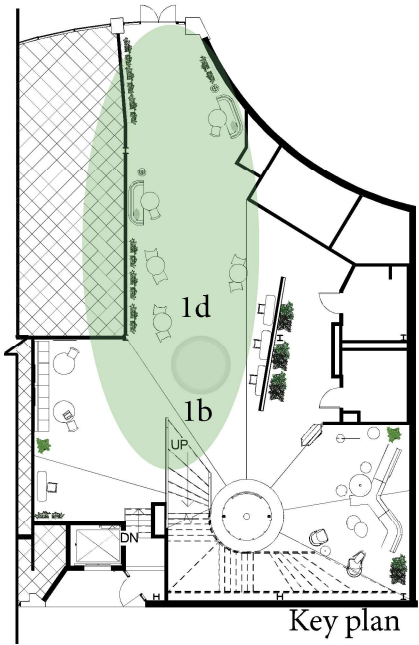
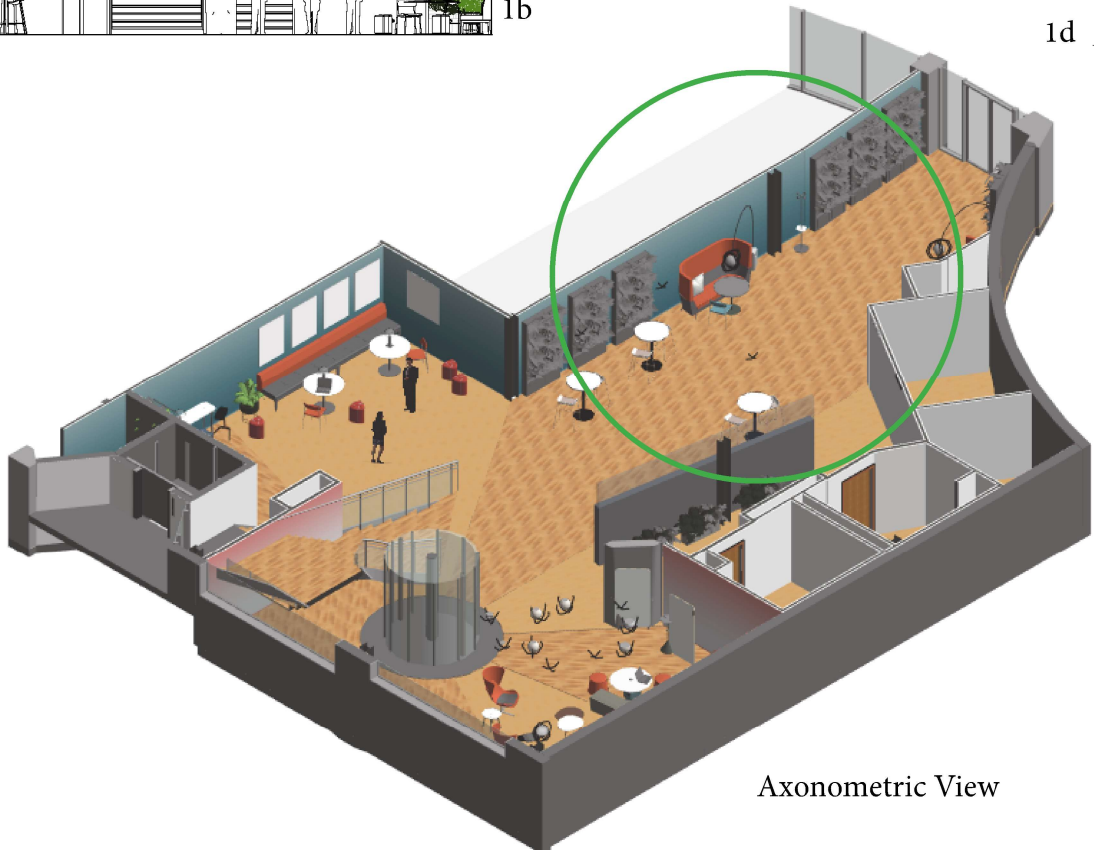
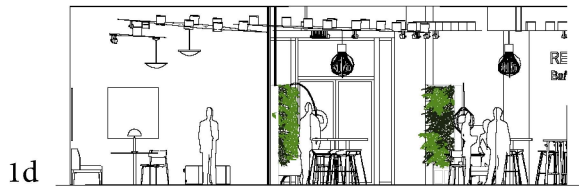
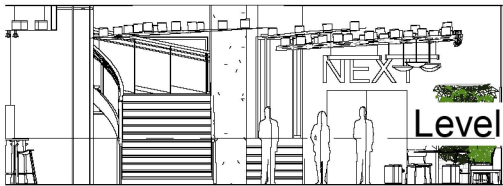
— Furniture Piece- Scoop Seating
Stool
Material- 6618 White, 3935301
Distressed Peony



— Furniture Piece-1536833427
Aspdct-09
Materials- 5L36 Heather Blue,
TR08 Red Current, Aluminum

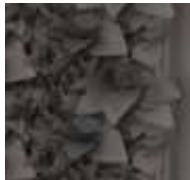


— Furniture Pieces- Flex Table Slim,
Last Minute seating stool high
Materials- 6527 Mearle, 2730
Arctic White, Metal Black, P630
Heather grey, 3602 Desert Oak,
RE10 Blue Jean

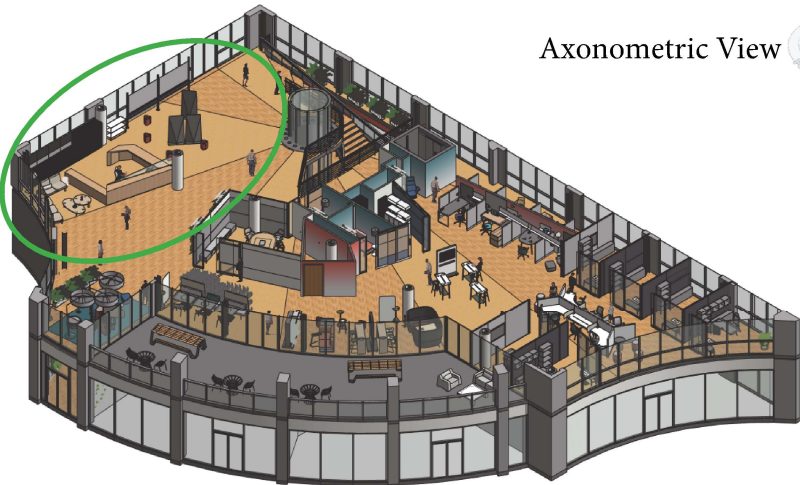
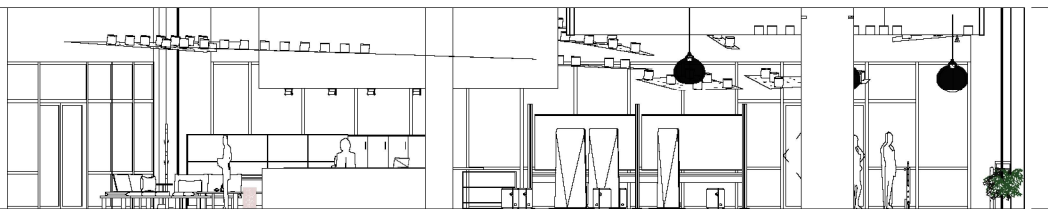
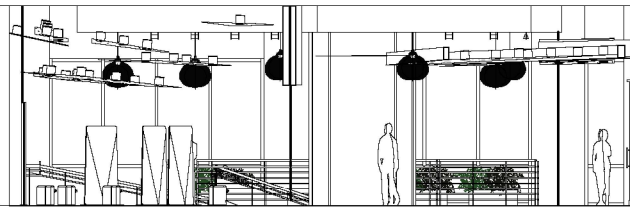
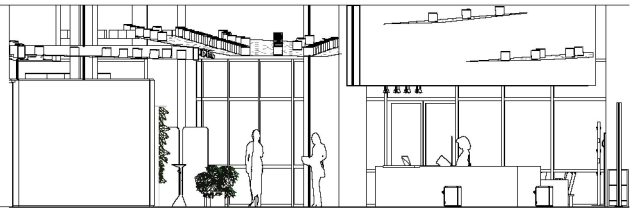


Second Floor Renderings: Reception and Inspiration zone

The logo is made of metal that is building out of Atlanta to show how NEXT is a reflection of Atlanta but still grows beyond that.



- Furniture Piece- Pivot screen
Materials- 2730 Arctic White, 7360 Merle, 5H26 Olivine
- Furniture Piece- Camfire Pouf
Material- 5G74 Picnic, Grey foam
- Furniture Piece-Verdanta Florish
Living Wall
Materials- N/A
- Furniture Pieces- N/A Logo
Materials- Aluminum
- Furniture Piece- N/A reception
Desk
Materials-Beech, glass



Second Floor Renderings: Open office and Private Offices

The design utilizes large windows to keep visual connection between the workplaces and also to act as a representation of the transparency that is valued in the company.



Open office from back



Open office From hall



Furniture Piece- Buoy Seating
Material- 5X26 Licorice



Furniture Piece-Mediaboard
Storage
Materials- 24137 Matte Black,
V145 Milk



Furniture Piece- Series 2 Chair
Materials- 5L35 Marina, 6053
Seagul



Furniture Pieces- Flex Work Ta-
ble, Ena Seating Bar
Materials- 7360 Merle, 6053
Seagul, 0423 Ocean, 7246 Mid-
night Metallic

